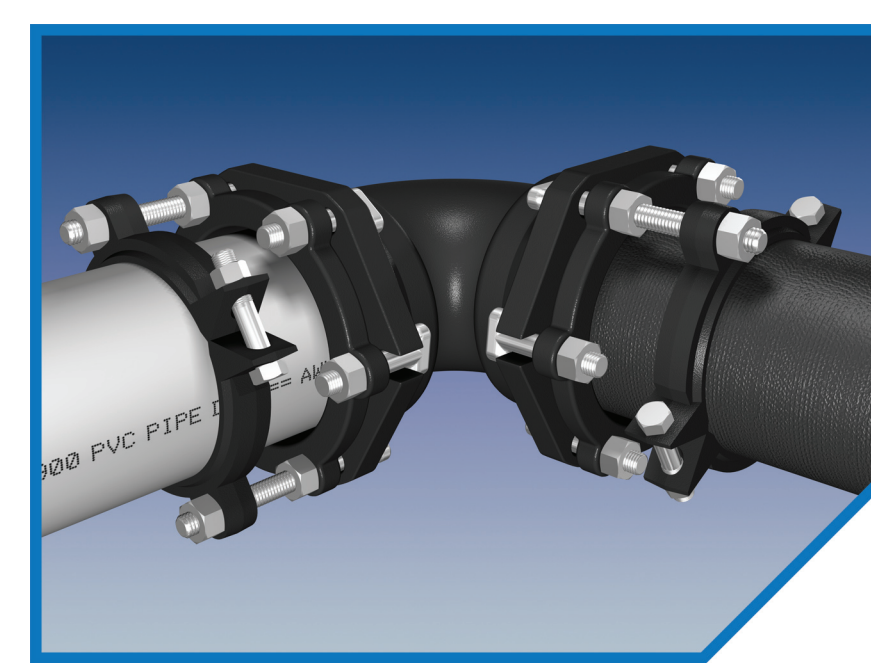
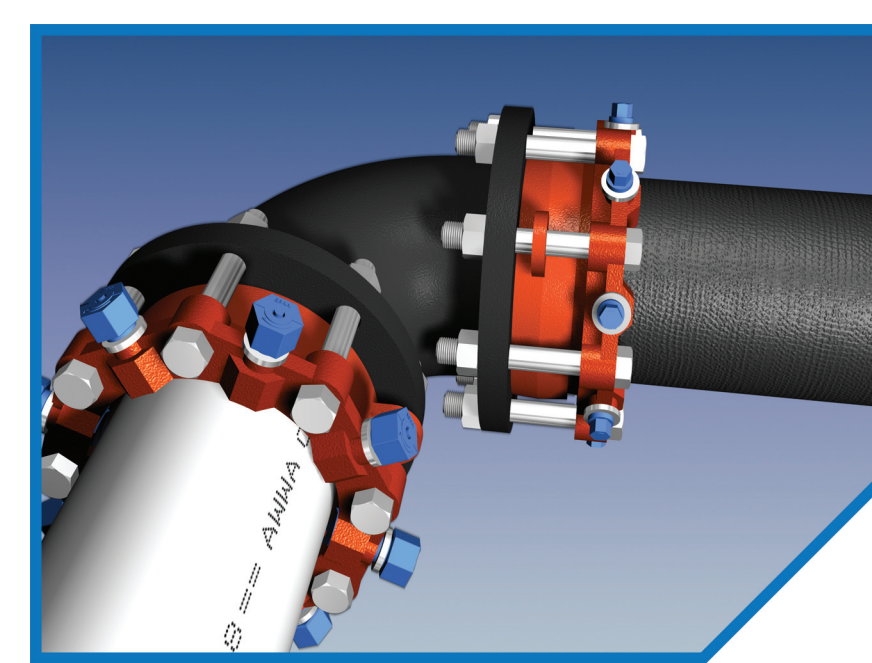


"Your Connection to the Future"™

Pipe O.D. Chart



Pipe Material		1/2	5/8	3/4	1	1 1/4	1 1/2	2	2 1/2	3	3 1/2	4	4 1/2	5	6	7	8	9	10	12	14	15	16	18	20	21	22	24	27	30	36	42	48
Ductile Iron										3.96		4.80			6.90		9.05		11.10	13.20	15.30		17.40	19.50	21.60			25.80		32.00	38.30	44.50	50.80
PVC	DIP											4.80			6.90		9.05		11.10	13.20	15.30		17.40	19.50	21.60			25.80		32.00	38.30	44.50	50.80
	IPS	0.84		1.05	1.315	1.66	1.90	2.375	2.875	3.50	4.00	4.50		5.563	6.625		8.625		10.75	12.75	14.00		16.00	18.00	20.00			24.00		30.00	36.00	42.00	48.00
	PIP											4.13			6.14		8.16		10.20	12.24	14.28	15.30		18.701		22.047		24.803	27.953				
Steel	Standard	0.84		1.05	1.315	1.66	1.90	2.375	2.875	3.50	4.00	4.50	5.00	5.563	6.625	7.625	8.625	9.625	10.75	12.75	14.00		16.00	18.00	20.00		22.00	24.00		30.00	36.00	42.00	48.00
	O.D.									3.00		4.00			6.00		8.00		10.00	12.00													
	RIV.														6.25	7.25	8.25		10.25	12.25													
Cast	cl A							2.50		3.80		4.80			6.90		9.05		11.10	13.20	15.30		17.40	19.50	21.60			25.80		31.74	37.96	44.20	50.50
	cl B									3.96		5.00			7.10		9.05		11.10	13.20	15.30		17.40	19.50	21.60			25.80		32.00	38.30	44.50	50.80
	cl C									3.96		5.00			7.10		9.30		11.40	13.50	15.65		17.80	19.92	22.06			26.32		32.40	38.70	45.10	51.40
	cl D									3.96		5.00			7.10		9.30		11.40	13.50	15.65		17.80	19.92	22.06			26.32		32.74	39.16	45.58	51.98
	cl E														7.22		9.42		11.60	13.76	15.98		18.16		23.02								
	cl F														7.22		9.42		11.60	13.76	15.98		18.16		23.02								
	cl G														7.38		9.60		11.84	14.08	16.32		18.54										
	cl H														7.38		9.60		11.84	14.08	16.32		18.54										
HDPE	DIP											4.80			6.90		9.05		11.10	13.20	15.30		17.40	19.50	21.60			25.80		32.00	38.30	44.50	50.80
	IPS			1.05	1.315	1.66	1.90	2.375		3.50		4.50		5.563	6.625		8.625		10.75	12.75	14.00		16.00	18.00	20.00			24.00		30.00	36.00	42.00	48.00
Copper		0.625	0.75	0.875	1.125	1.375	1.625	2.125	2.625	3.125	3.625	4.125		5.125	6.125																		
A/C cl 100	ME OD									3.74		4.64			6.91		9.11		11.24	13.44	15.07		17.15	19.90	22.12			26.48					
	RB OD Min									4.00		4.79			7.05		9.22		11.42	13.69	15.40		17.54	20.44	22.50			27.17					
	RB OD Max									4.00		5.14			7.40		9.57		11.77	14.04	15.80		17.94	20.44	22.50			27.17					
A/C cl 150	ME OD									3.84		4.81			6.91		9.11		11.66	13.92	16.22		18.46	20.94	23.38			27.96					
	RB OD Min									4.10		4.97			7.07		9.27		11.82	14.08	16.38		18.62	21.20	23.54			28.22					
	RB OD Max									4.10		5.27			7.37		9.57		12.12	14.38	16.73		18.97	21.20	23.54			28.22					
A/C cl 200	ME OD									3.84		4.81			6.91		9.11		11.66	13.92	16.22		18.46										
	RB OD Min									4.29		5.22			7.26		9.39		11.77	14.03	16.48		18.79										
	RB OD Max									4.29		5.57			7.56		9.74		12.12	14.38	16.88		19.19										
SIMPLEX-A/C cl 100	ME OD									3.70		4.70			6.76		8.88		11.18	13.36	15.56		17.76										
	RB OD Min									3.95		4.95			7.01		9.13		11.43	13.61	15.94		18.14										
SIMPLEX-A/C cl 150	ME OD									3.88		4.85			6.95		9.15		11.70	13.96	16.26		18.50										
	RB OD Min									4.13		5.10			7.20		9.40		11.95	14.21	16.64		18.88										
SIMPLEX-A/C cl 200	ME OD									4.20		5.20			7.50		9.76		12.20	14.46	16.88		19.30										
	RB OD Min									4.45		5.45			7.75		10.01		12.45	14.72	17.26		19.68										

Sewer Pipe

PVC	SDR35											4.215			6.275		8.40		10.50	12.50		15.30		18.701		22.047		24.803	27.953	32.00	38.30	44.50	50.80
A/C Sewer	cl 1500											4.81		5.90	6.92		9.02		11.12	13.22	15.30	16.34	17.38										
	cl 2400											4.87		5.97	6.98		9.04		11.16	13.26	15.36	16.42	17.46	19.54	21.66	22.47		25.78					
	cl 3300											5.05		6.15	7.14		9.22		11.36	13.50	15.46	16.66	17.72	19.82	21.88	23.03		26.10		32.34			
	cl 4000																	11.50	13.64	15.78	16.84	17.90	20.02	22.10	23.29		26.32		32.60				
	cl 5000																	11.70	13.86	16.00	17.06	18.14	20.36	22.32	23.66		26.20		32.90				
	A/C ME												4.62		5.78	6.66		8.96		11.05	13.15	15.23	16.11	17.31	19.39	21.45	22.37		25.67		32.13		
cl Soil No Hub												4.30		5.30	6.30		8.40		10.50	12.50		15.62											
clay												4.85		6.31	7.19		9.25		11.50	13.75		17.19		20.65		24.13		27.50	31.00	34.38			
												5.38		6.65	7.93		10.09		12.88	15.30		18.70		22.40		26.43		29.84	32.13	35.63			
Concrete												6.00			8.00		10.25		12.75	15.50		18.75		22.00		25.50		29.00	32.25	35.50			

Pipe diameters listed above are approximate.